

CASE STUDY

# Concord Street, Leeds

Frameclad were appointed by the main contractor to provide innovative light steel framing solutions for a challenging development in Concord Street, Leeds. The contemporary new build scheme located in the city centre, comprises 35 studio, one and two-bedroom residential apartments. Utilising innovative techniques, Frameclad navigated the complex site and met all project requirements.

**SITE**

Concord Street, Leeds

**PRODUCTS**

Loadbearing SFS - assembled and boarded walls / lattice joist floors with metal decking / roof

**MAIN CONTRACTOR**

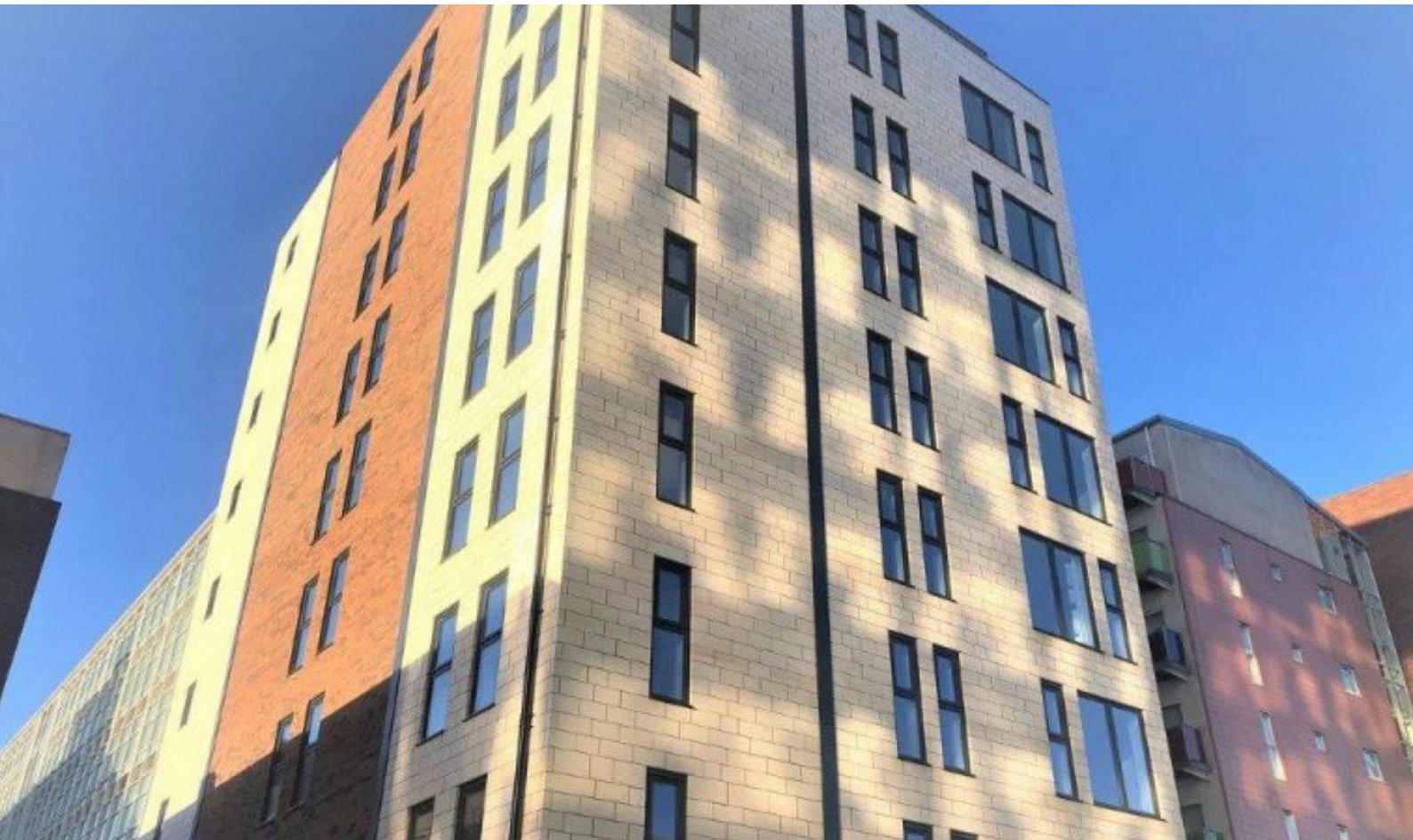
SJM

**AREA**

3000m<sup>2</sup>

**FLOORS**

Nine storeys





## CASE STUDY

# Concord Street, Leeds

Situated in a well-connected central location, the site provided significant challenges, not least due to narrow off-street access, meaning that on site construction works had to be minimised. As industry trailblazers, the Frameclad team with their 'can do' attitude and great technical know-how, collaborated with the contractor and architect to overcome these issues and meet the specific needs of the project.



Maximising state-of-the-art digital and offsite technology the specialist team at Frameclad designed engineered and manufactured an advanced loadbearing steel frame solution (SFS) using a full Building Information Modelling (BIM) approach with customised Tekla software. Using Frameclad's loadbearing frames provided multiple benefits to the project, including faster and safer installation to help speed up the building programme.

Using Design for Manufacture and Assembly (DfMA) protocols, Frameclad optimised the cutting-edge loadbearing steel framing system, resulting in faster assembly, enhanced sustainability and significantly reducing construction time, enabling site restrictions to be overcome and project deadlines to be met.

Using a platform approach, the specialised flooring system delivered a working platform to facilitate the construction of further storeys, ensuring constant site safety throughout the build. With Frameclad's extensive expertise and tenacious approach to fulfilling client requirements, the resulting development was finished on time, on budget and to a high quality.

**As a leading BOPAS-accredited manufacturer, Frameclad are committed to achieving the highest quality standards, manufacturing all products in a state-of-the-art 50,000 sqft framing facility, all of which are fully compliant with EN 1090-1: 2009 + AL: 2011 CE accreditation.**

## FRAMECLAD

Building 40 | Third Avenue | The Pensnett Trading Estate | Kingswinford | West Midlands | DY6 7UP

**T: 01384 401114**

**E: [enquiries@frameclad.com](mailto:enquiries@frameclad.com)**

**[www.frameclad.com](http://www.frameclad.com)**

