

CASE STUDY

Windsor House, Sutton

Frameclad provided their renowned, expert light steel framing solutions to an upmarket development in Sutton. The ultra-modern Windsor House scheme comprises 27 apartments, finished to exceptional standards. By deploying innovation and expertise, coupled with tenacity, Frameclad navigated the site restrictions and challenges to design, manufacture and deliver the steel framing solutions for this project, with unparalleled quality ensuring the client vision was realised.

SITE

Windsor House, Sutton

PRODUCTS

Assembled Frame SFS – lattice joist floors and cassette roof

MAIN CONTRACTOR

Providence

CLIENT

Optivo Homes

AREA

8300m²

FLOORS

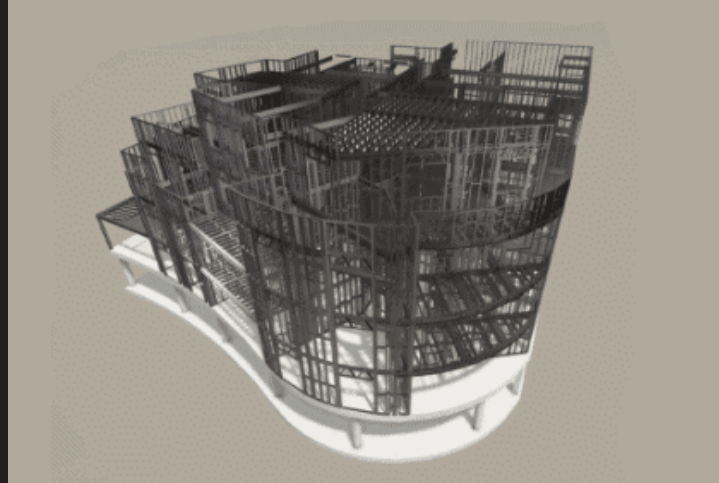
Five storeys



CASE STUDY

Windsor House, Sutton

Located in the sought-after Borough of Sutton, Windsor House is a modern development of shared ownership residential apartments. The striking building houses eight one-bedroom apartments, 16 two-bedroom and three three-bedroom apartments, each finished to exceptional standards.



The Windsor House development was constructed from a precast concrete podium, with the five additional levels constructed from light steel frame with minimal hot rolled requirements. Delivered in the form of light steel prefabricated panelised solutions, lattice joist floors and cassette roof. Maximising state-of-the-art, offsite Modern Methods of Construction (MMC), the expert engineering team at Frameclad designed and manufactured the assembled steel frame solution (SFS), utilising their customised Tekla software. By incorporating cutting-edge lightweight steel framework which utilises bespoke Building Information Modelling (BIM) software and engineering techniques, Frameclad's design and engineering team worked in total synergy with the client to ensure a cost effective, safe and sustainable solution – that is not only robust and reliable but is also practical to install.

The site presented some restrictions and challenges such as tight access with only one unloading bay and high volumes of traffic. Offsite construction provided the ideal solution and Frameclad were the supplier of choice. Known for their dynamic approach, 'can do' attitude and going the extra mile, the Frameclad team executed carefully coordinated 'just in time' delivery slots to ensure the build schedule was adhered to.

As a leading BOPAS-accredited manufacturer, Frameclad are committed to achieving the highest quality standards, manufacturing all products in a state-of-the-art 50,000 sqft framing facility, all of which are fully compliant with EN 1090-1: 2009 + AL: 2011 CE accreditation.

FRAMECLAD

Building 40 | Third Avenue | The Pensnett Trading Estate | Kingswinford | West Midlands | DY6 7UP

T: 01384 401114

E: enquiries@frameclad.com

www.frameclad.com

