

## CASE STUDY

# Wembley Point, London

This prestigious project involved a full refurbishment of a reinforced concrete structure. Frameclad provided innovative light steel framing solutions to overcome the challenges of this development and deliver high quality results. The towering structure was transformed from commercial block to 439 residential units with 46 car parking spaces.

### SITE

Wembley Point, London

### PRODUCTS

Stud & Track and Floor Infill Sections

### MAIN CONTRACTOR

Buildtherm

### CLIENT

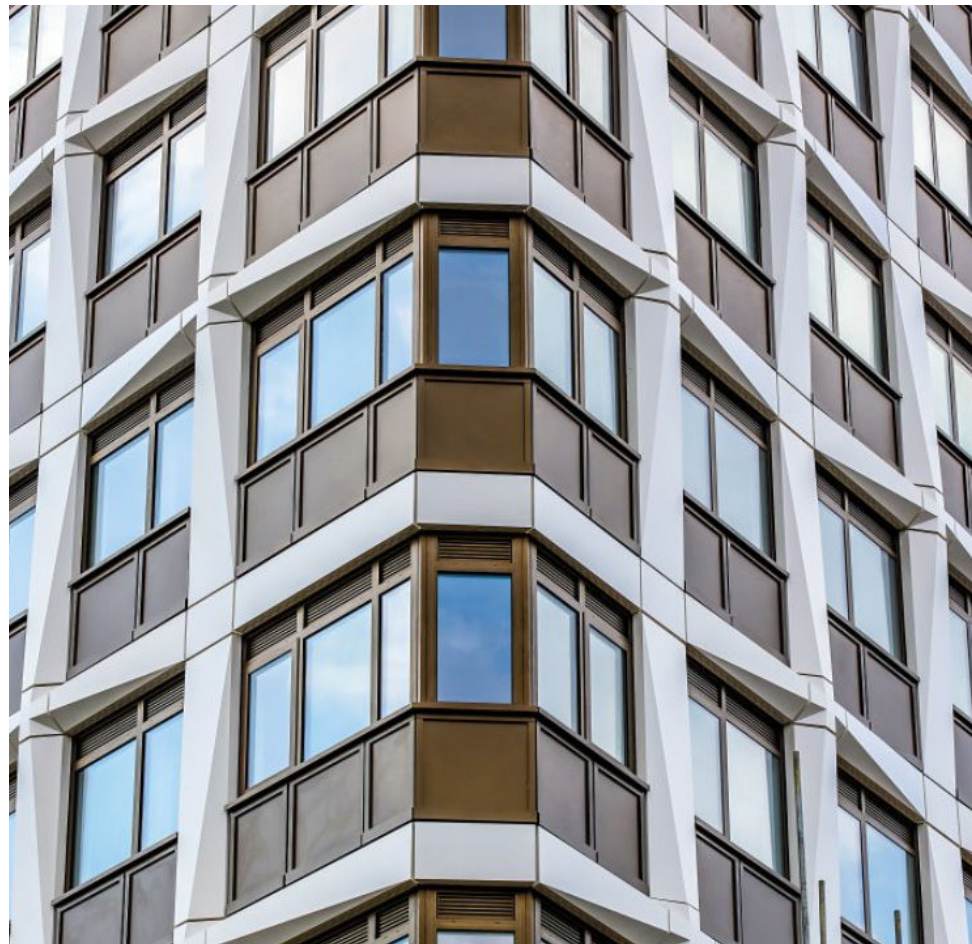
RGB

### AREA

8000m<sup>2</sup>

### FLOORS

Twenty storeys



CASE STUDY

# Wembley Point, London

Towering over the North Circular, the Wembley Point building is an imposing sight on the skyline. Once an ageing, concrete frame office block from the 1960s, now an impressive, modern apartment complex with a striking cladding design.



Frameclad were appointed by the main contractor to design, manufacture and supply steel framing solutions to navigate the complex project requirements. Applying their agility and innovative approach, Frameclad deftly navigated the issue of sparse and inaccurate information relating to the existing structure, employing a range of specialist techniques to overcome these challenges.

The expert design and engineering team at Frameclad utilised a full BIM approach with customised Tekla software in order to maximise precision and overcome roadblocks in fabricating the steel frame solutions. This innovative constructible modelling software allowed the team to 'fill in the gaps' in the sparse historic information they had to work with, to identify and overcome issues in this regeneration project.

All existing external walls were removed and replaced across the entirety of the building, with infill floor section extensions to the concrete floors, which were

a particular challenge. However, as industry trailblazers, the Frameclad team with their 'can do' attitude and great technical know-how, collaborated with the contractor to navigate the issues and deliver a project aligned to the client vision.

By utilising Frameclad's extensive expertise, the conversion of this striking building into sleek apartments was delivered on time, on budget and to exceptional standards.

**As a leading BOPAS-accredited manufacturer, Frameclad are committed to achieving the highest quality standards, manufacturing all products in a state-of-the-art 50,000 sqft framing facility, all of which are fully compliant with EN 1090-1: 2009 + AL: 2011 CE accreditation.**

## FRAMECLAD

Building 40 | Third Avenue | The Pensnett Trading Estate | Kingswinford | West Midlands | DY6 7UP

**T: 01384 401114**

**E: [enquiries@frameclad.com](mailto:enquiries@frameclad.com)**

**[www.frameclad.com](http://www.frameclad.com)**

